

# Inter-County Community Council

## ANNUAL REPORT

**A Community  
Action Agency**

SERVING...

**Clearwater,  
East Polk,  
Pennington, &  
Red Lake**

COUNTIES



**52  
Years**  
of Service  
to our  
Communities

**2016 - 2017**

**[www.intercountycc.org](http://www.intercountycc.org)**

P.O. Box 189 • Oklee, MN 56742

**218-796-5144 • Fax 218-796-5175**

# Table of Contents

Inter-County Community Council's Board of Directors .....	Page 2
Head Start Policy Council .....	Page 2
Legislative Membership.....	Page 2
Executive Director's Notes.....	Page 3
Agency Mission Statement .....	Page 3
Skip Swanson Recognition .....	Page 4
Staff Service Awards .....	Page 4
Program Reports	
Employment and Training Programs .....	Pages 5-7
Energy Assistance Program .....	Page 8
Weatherization Program .....	Page 9
Conservation Improvement Program .....	Page 9
Family Services Programs .....	Page 10-11
MNSure .....	Page 11
Free Tax Clinic .....	Page 11
Head Start.....	Pages 12-15
Financial Statement.....	Pages 16-17
Holiday Train Recap.....	Page 18
Food Shelf .....	Page 19
The Promise of Community Action.....	Page 19
Inter-County Community Council's Staff Members.....	Page 20

# 2016-17 Inter-County Community Council Board

John Nelson  
Clearwater County .....Since 2001

Jen Forsberg  
Clearwater County .....Since 2015

Jessica Horn  
Clearwater County .....Since 2015

Jennifer Kvaale  
East Polk County .....Since 2015

Joan Lee  
East Polk County .....Since 2015

Louann McGlynn-**Vice Chair**  
East Polk County .....Since 2010

Don Jensen  
Pennington County .....Since 2017

Frances Tougas  
Pennington County .....Since 2016

Cassandra Reese  
Pennington County .....Since 2012

John Lerohl-**Board Chair**  
Red Lake County .....Since 2007

Tim Hagl  
Red Lake County .....Since 2015

Patricia Purath-**Secretary/Treasurer**  
Red Lake County .....Since 2012

Carol Sorenson  
At Large .....Since 2015

James DuChamp  
At Large .....Since 2015

Sheri Huth  
At Large .....Since 2017

Jesse Tollefson/Amanda Asp  
HS Board Liaison ..... Since 2016/2017

## Policy Council Representatives 2016-17

Bagley:  
Home Based Rep. .... Michael Weller

RLCC:  
Rep..... Jazz Warmington  
Alt. .... Samantha Tofstad

TRF:  
CG Rep..... Michele Beito  
HB Rep..... Amanda Asp  
EHS Rep..... Josh Iverson

Win-E-Mac:  
EHS Rep..... Ari Schwartz

### CARRYOVER

Tina Davis Stephanie Westall  
Tamara Salentiny

COMMUNITY REPRESENTATIVE  
Sheri Huth

INTER-COUNTY BOARD LIAISON  
Jesse Tollefson / Amanda Asp

### Legislative Membership for Inter-County Community Council's Service Area

#### US Senate

Amy Klobuchar  
Al Franken

#### US Congress

District 7:  
Collin Peterson

#### State Representatives

District 2A:  
Matthew Grosswell

#### District 2B:

Steve Green

#### District 1A:

Dan Fabian

#### District 1B:

Debra Kiel

#### State Senators

#### District 1:

Mark Johnson

#### District 2:

Paul Utke

---

# Executive Director's Notes

---

## GREETINGS FROM INTER-COUNTY COMMUNITY COUNCIL

Through a grant from the Northwest Minnesota Foundation, Inter-County Community Council (in partnership with the Northwest Private Industry Council) contracted with the Nonprofit Centers Network (NCN) to conduct a feasibility study to explore the potential to develop a multi-tenant nonprofit center serving Thief River Falls, Minnesota and surrounding communities. The feasibility study was conducted from December 2 to March 17, 2017 and included the participation of more than 75 individuals representing more than 50 organizations from Thief River Falls and surrounding areas. The study gathered quantitative and qualitative data through the following:

- Town Hall meeting and presentation
- Advisory Committee meeting and presentation
- Two focus groups and interviews
- 54-question electronic survey
- Site visits to two potential locations
- Financial modeling

This process guided us in learning about and developing a variety of potential partners in

the community. While owning and operating a physical building is not currently our plan, we learned many lessons along the way. We are now in the process of developing a new rental agreement with a local community partner – and we tentatively plan to move in early Fall of 2018.

I believe we are moving forward in the best interest of the community and our organization. Sometimes we have to rethink what success is and be ready to adapt and change. This is also true with our communities and the families we work with. Success, it seems, needs to continually be reexamined, redefined and adaptable.

Thank you to our Board of Directors who remains open to new and innovative ideas to address barriers within our local communities.

To our employees, thank you for showing up and giving ICCC your best. Your dedication to our programs and services is inspirational.

Our greatest honor and appreciation goes to the people within our community who allow us to be part of their lives. As employees of ICCC, let us never forget that the people we serve are the entire reason our agency exists.

Yours in Action,

Catherine Johnson  
Executive Director

## Agency Mission Statement

*To provide services, assistance and other activities of sufficient scope and magnitude to give promise of progress toward the alleviation of poverty, its symptoms and causes.*



# ICCC recognizes Oliver 'Skip' Swanson



ICCC recognized long standing Board member Oliver 'Skip' Swanson who has served on the ICCC Board for 32 years. **THANK YOU SKIP!**

## Staff Service Awards



**Gayle Flateland, 35 years**



**Kim Johnson,  
35 years**



**Lynette Kaster,  
15 years.**



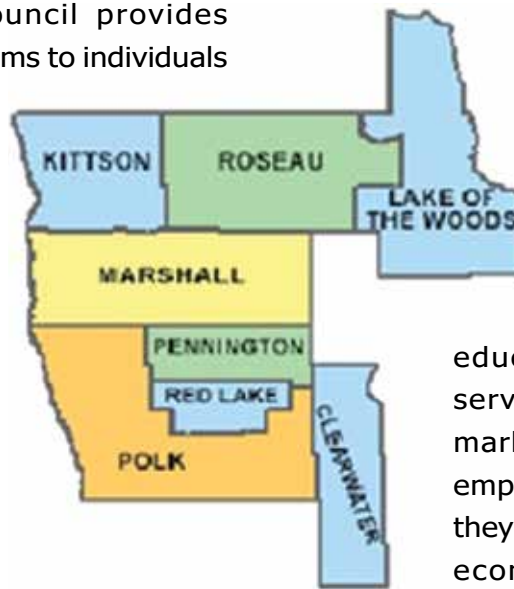
**Paul Kaster, 15 years**



**Catherine Johnson, 15 years**

# Employment & Training Department

Inter-County Community Council provides Employment and Training programs to individuals throughout the Northwestern Region of Minnesota. The service area for youth, adult and dislocated worker programs are the following counties: Kittson, Marshall, Roseau, Pennington, Red Lake, Polk and Norman. Our Senior citizen program serves individuals in Red Lake, Pennington, Polk, Clearwater, Roseau and Lake of the Woods counties.



## Workforce Investment & Opportunity Act (WIOA)

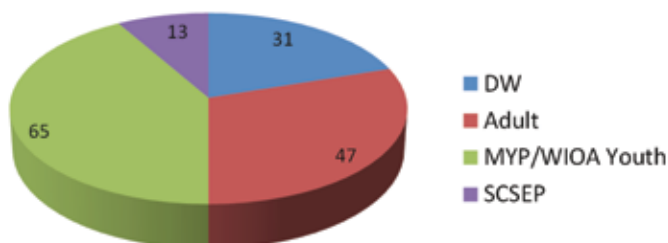
The WIOA program focuses on helping job seekers and workers access employment, education, training and support services to succeed in the labor markets. It is designed to match employers with the skilled workers they need to compete in the global economy. Each WIOA program requires certain eligibility requirements

to qualify for the programs. The separations of the WIOA Programs are based on age and job status:

- **In-School Youth** (14-21 years of age & currently connected to a school)
- **Out-of-School Youth** (16-24 years of age & currently not connected to a school)
- **Adult** (18 & over)
- **Federal/State Dislocated Worker** (Anyone that has lost their job through no fault of their own)

As a sub-recipient of the Northwest Private Industry Council we provide services through the Workforce Investment & Opportunity Act (WIOA), focusing on In-School Youth (ISY), Out-of-School Youth (OSY), Adult, and Federal and State Dislocated Worker (DW) programs. We continue to receive funding for the Minnesota Youth Program (MYP) and Senior Community Service Employment Program (SCSEP). All the grants the Employment and Training department receives focus on individuals obtaining self/family sustaining wages.

# of Enrollments Oct. 2016-Sept. 2017



ICCC's WIOA services covers 8,400 square miles and 25 school districts. The majority of the clients who have enrolled in classroom training

obtain their training from Northland Community and Technical Colleges. Both the Thief River Falls

**ICCC's WIOA services covers 8,400 square miles and 25 school districts!**

CONTINUED ON NEXT PAGE

and East Grand Forks campuses have been very easy to work with. Other colleges participants have selected are: Bemidji State University, Northwest Technical College, University of Minnesota Crookston and Saint Cloud Technical and Community College. Many clients are looking to enroll in online classroom training so they can continue to work part-time. Clients may select what college they would like to go to as long as the program and college are certified by WIOA. Although this list is small, we continue to work to enhance our relationships with other colleges. We have also been focusing on building relationships with Alternative Learning Centers, Adult Basic Education providers and area high schools.

**In-school youth** participants are youth between the ages 14-21, who are enrolled in school, low-income (those eligible for free or reduced lunch are considered low income) and at-risk. They must also have additional barriers to meeting their educational and employment goals such as: being basic skills deficient, English language learner, on probation, pregnant/parenting, homeless (includes couch hopping), runaway, in foster care or aged out of foster care, have a physical, mental, learning or other disability that could be a barrier.

**Out-of-School** participants are at-risk youth, ages 16-24, NOT attached/enrolled in a high school, alternative learning center, or registered for post-secondary (college) classes, and have one or more additional barriers such as: dropped out of school, have high school diploma but are unemployed or underemployed, enrolled in Adult Basic Education or studying for GED, on probation, pregnant/parenting, homeless (includes couch hopping), runaway, in foster care or aged out of foster care, low income, or have a physical, mental, learning or other disability that could be a barrier to meeting their educational and employment goals. Our goals are to assist

them with employment opportunities that allow them to obtain a career meeting self/family sustaining wages.

Comprehensive Guidance Counseling, Staff Assisted Assessment, Mentoring, Work Experience, On-the-Job Training and Classroom Training are activities each Job Training Specialist focuses on with participants. Although each participant's training plan may consist of some or all of these activities, ICCC focuses on individual training plans to meet the specific needs of the participants.

**Classroom Training** assistance is a large part of this program and assists us helping clients with the overall goal of unsubsidized employment. Youth, Adults and Dislocated workers can receive tuition assistance for approved training programs and are encouraged to enroll in high-wage high-demand occupations within the region. Staff Assisted Assessment and Job Search, along with

Work Experience and On-the-Job Training

opportunities make this program a life changing opportunity for these youth. Working with WIOA participants has required much one-on-one staff time but the challenges have seemed to decrease over time. Building relationships with Adult Basic Education, Vocational Rehabilitation,

DEED, colleges and local high schools has been essential to program success. We will continue to assist participants and encourage eligible individuals to use the program for career goals.

When Work Experience or On-the-Job Training is deemed appropriate, our staff works with the participant and worksite supervisors to orientate them to the program goals. The change in funding has significantly reduced the number of Work Experience and On-the-Job Training opportunities we are able to provide.

**Building relationships with community partners is essential to program success!**

CONTINUED ON NEXT PAGE

## Senior Community Service Employment Program (SCSEP)

SCSEP is a program for participants 55 and older looking for employment on a part-time basis to supplement the limited income they have. We have found that many participants need additional income to continuing to live in their communities. We look to place them in schools, cities offices, and other community-orientated businesses. Many worksites appreciate the SCSEP program participants and often become the biggest advocates for them in finding unsubsidized employment. They also assist Employment and Training staff in identifying resources that may be available to the participant within their community. Our focus for PY 2018 is to have constant communication with our service area to gain participants. This constant communication will be completed by follow-ups, presentations and radio/newspaper recruitment. We find that potential participants don't know about the program, therefore, our main goal is to educate them about ICCC.

## Minnesota Youth Program

This program provides comprehensive summer and year-round employment and training services to economically disadvantaged and at-risk youth. Comprehensive services prepare at-risk We prepare the Minnesota Youth, ages 14-24, for the world of work including: career exploration and planning, labor market information on in-demand occupations, work readiness skills, financial literacy training and quality work experience opportunities. Youth learn to apply skills learned in the classroom to real-world settings; their work accomplishments benefit local communities. Hands-on learning improves students' grades, attendance and graduation rates. Due to the performance outcomes necessary in WIOA, the ICCC Employment and Training department have been using the MYP funds in 2016 as a "testing ground", for those potentially eligible for the WIOA In-School and Out-of-School Youth.

**Hands-on  
learning improves  
students' grades,  
attendance and  
graduation  
rates!**



# Energy Assistance 2016-2017



## Primary Heat Assistance

Primary Heat assistance in the amount of \$896,900 was distributed to 1,242 households. The average energy assistance grant was \$722 per household. A total of 128 households were denied assistance either because of lack of sufficient income verification, over-income, or applying after the end of our program year. The following is a breakdown by County of primary heat assistance:

County	# of Households	Primary Grant Amt.
Pennington	508	\$318,236
Polk (east)	509	\$411,615
Red Lake	225	\$167,049
<b>TOTALS</b>	<b>1,242 households</b>	<b>\$896,900</b>



threatening safety, or no heat problems due to malfunctioning or non-functioning primary and secondary heating systems. As a crisis program, ERR response to calls must be immediate, in compliance with federal law, and the purchasing process is expedited. Qualified installers make mechanical and safety repairs and installations, and 50% or more of the installation work must be inspected.

ICCC spent \$38,958.12 last year under the ERR program to assist 68 households. Sometimes numerous trips were required from furnace technicians or electricians to repair or replace furnaces. Breakdown of ERR assistance per county is as follows:

County	#Household Events	ERR Amount
Pennington	22	\$15,542.90
Polk (east)	28	\$16,395.33
Red Lake	18	\$ 7,019.89
<b>TOTALS</b>	<b>68 households</b>	<b>\$38,958.12</b>

## Crisis Program

The intentions of the Crisis Program are:

- Assist households who are facing a natural gas or electric shut off during the heating season.
- Assist households with a fuel fill when the household has less than 30% remaining fuel, is on a "cash only basis" with the vendor, and unable to get a fuel delivery on their own.
- Assist senior households (1 member of household must be 60 years or older) who are unable to pay their past due or current heating/electric bill.

A total of \$133,150 was spent in the Crisis Program. This assistance was provided to 322 households in our 2½ county service area. The following is a breakdown by County of households receiving crisis assistance benefits:

County	# of Households	Crisis Amount
Pennington	128	\$50,553
Polk (east)	150	\$62,936
Red Lake	44	\$19,661
<b>TOTALS</b>	<b>322 households</b>	<b>\$133,150</b>

## Energy Related Repair Program

The Energy Related Repair Program (ERR) is a crisis program that addresses hazardous and life

## Reach Out for Warmth

Reach Out for Warmth (ROFW) is an emergency program available to households who income qualify and are facing disconnection, or in the winter months may be in a no heat situation and unable to purchase heating fuel on their own. Funding for this program is through locally raised donations. ICCC obtained ROFW donations from an electric vendor, churches and individuals. ROFW funds are strictly from donations. Our ROFW donations this year totaled \$1,702.23. This program year we provided ROFW assistance to a total of 10 households who were either in a no-heat situation and unable to get a fuel delivery on their own, or facing natural gas/electric disconnection. All payments were sent directly to the heat/electric vendors.

*A Special Thank You...*

...to all who donated to the  
Reach Out For Warmth Program

# Weatherization

The Minnesota Weatherization Assistance Program (**WAP**) received \$7,976,757.00 from the Department of Energy for the 2016-2017 program year. ICC's share of the DOE funding is \$212,081.00 combined with Energy Assistance Transfer funds for a total from all sources of \$465,070.00 to do 40 homes in Pennington, East Polk, Red Lake and Clearwater counties.

The mission of the weatherization program has remained the same over the years, to provide energy savings, comfort and to maintain the health & safety of our client's homes by using proven energy conservation techniques developed over the years to determine the most cost effective measures to save the most energy in our client's homes and keep them safe. Weatherization Auditors are skill certified through the Building Performance Institute (BPI) and additionally as Quality Control Inspector (QCI) certification.

Participants in the weatherization program may receive:

- ❖ Educational material and on site analysis of their energy usage.
- ❖ Heating system efficiency and safety testing, possible upgrades.
- ❖ Whole house energy audit to determine conservation activity.
- ❖ Wall and Attic insulation.
- ❖ Air infiltration and bypass sealing.
- ❖ Safety improvements.



**Weatherization  
before and after  
photos**



## Conservation Improvement Programs

### OTTER TAIL POWER COMPANY

Otter Tail Power Company and Inter-County Community Council is again offering House Therapy to income qualifying customers. The program emphasizes individual customer education and provides home energy analysis that leads to the installation of energy-efficiency measures at no cost to qualifying customers. House Therapy is designed to help customers save money on their electric bills.

### MINNKOTA POWER ASSOCIATES (CIP)

Minnkota Power Associates continue the partnership with Inter-County.

To deliver the Conservation Improvements Programs. Inter-County Community Council received grants from Red Lake Electric Co-op, City of Thief River Falls Utilities, City of Fosston Utilities, City of Bagley Utilities, Clearwater Polk Electric Co-op and Wild Rice Electric Co-op to do variety of energy conservation activities such as new CFL light bulbs, low-flow showerheads, ECM blower motors and weatherization for their customers.

# Family Services



The Family Service Department is a small department offering great services! There are four full-time case managers working within Family Services; the department is led by family services director, Bonnie Paquin Lori Wollman, Jessica Ouradnik, Ashley Tofsly. These four people work hard to bring you the following programs:

## **The Family Homeless Prevention and Assistance Program (FHPAP)**

## **The emergency Services Program (ESP)**

## **The Transitional Housing Program (THP)**

## **The Permanent Supportive Housing Program (PSH)**

## **The Long-Term Homeless Program (LTH)**

## **Homeless Youth (ages 24-younger) (HYA)**

## **Emergency Solutions Grant (ESG)**

## **The Supplemental nutrition Assistance Program (SNAP) outreach**

## **The Riverside Long-Term Homeless Project**

## **River Pointe Terrace Long-Term Homeless Project.**

These programs and services are offered to families and individuals in Clearwater, Pennington, Red Lake and East Polk Counties. We help households who are homeless or at-risk of becoming homeless. We may be able to help an individual or a family if they are in one of the following situations:

- Unable to make mortgage, rent or utility payments and, eviction or a utility shutoff.
- Lost their home due to natural disasters.
- Forced to leave home due to an abusive situation.

- Living in a tent, car, or other inappropriate housing.

We assist those who apply based on program eligibility and household need. Once enrolled, participants may receive monthly case management services and support for six months or more, along with their financial assistance. Case management consists of phone calls, office visits, home visits and mailings. The goal of case management is to empower and promote self-sufficiency within the household.

## **2016/2017 Family Services Annual Program Report Chart**

Program	Individuals and Households Served 7-1-2016 through 6-30-2017	
FHPAP	54 Households	130 Individuals
LTH	24 Households	41 Individuals
ESP	10 Households	15 Individuals
THP	19 Households	28 Individuals
PSH	5 Households	5 Individuals
HYA	18 Households	21 Youth Clients
ESG	21 Households	50 Individuals
Riverside	4 households	4 individuals
River Pointe	4 households	15 individuals



# Family Services

## MNSURE



ICCC is continuing with MNSure outreach, through all of our agency programs, which was started in 2013 and continues to provide education and enrollment assistance to the community. We have one Certified Navigator who helps consumers apply for health insurance through the state MNSure website.

Our staff provided outreach and enrollment to the public through many events. During Head Start/ Early Head events, Energy Assistance Program applications, and through intake screenings in Employment & Training, Food Shelf and Family Services/Homeless programs. We also placed newspaper ads, radio ads, and gave out information at the county fairs and health fair booths, at Policy Council and Board meetings, SNAP outreach and all application assistance programming. We used a screening tool to determine which plans households might be eligible for.

Households screened for health insurance eligibility	100
Households who were eligible for a qualified health plan or had health ins offered by employer	5
Clients deemed eligible for MA or MNCARE	80
Clients deemed eligible for a tax credit premium reduction	41
Households assisted with the enrollment and renewal process	95

## Free Tax Clinic

ICCC offered a tax clinic where families and individuals can go to have their income taxes done at no charge. The clinic was set up at the Public Library in Thief River Falls. This was available every Monday for the months of February, March, and April.

190 households were assisted with a total of \$175,744.00 in federal, state, and property taxes being refunded for tax year 2016.

## SNAP

(Supplemental Assistance Nutrition Program)



SNAP Screenings	2,677
Referred for Snap Assistance	11
CAF's completed	21
CAF's given out	78
Approved for SNAP benefits	66
Presentations Given	5
People attending presentations	83
Clients receiving SNAP information	440
People reached through promotion	1,540





# Head Start 2016-2017

## PROGRAM OPTIONS

ICCC Head Start provides comprehensive services including Child Development, Disabilities, Health, Dental Health, Mental Health, Nutrition, and Family Services. ICCC Head Start operates three program educational options:

### CENTER BASED

Children attend a classroom / center four days per week, families receive 6 visits yearly, and are invited to attend monthly family events. We have classrooms in Thief River Falls and Bagley for 4 year old children. In 2016-17 TRF children received 4 half days and Bagley children received 4 full days of classroom services. We will be increasing our TRF classroom to full days for our next program year.



(Release was signed for all pictures used.)



The mission of ICCC Head Start is to provide a high quality, comprehensive early education program that works with eligible children and families. Together we build partnerships that support lifelong learning and family self-sufficiency.

### COMBINATION

Children attend a classroom two-three days per week, the families receive one-two monthly in home visits, and families are invited to attend two monthly family events. We have classrooms in Fosston, Oklee, and Win-E-Mac that are run in conjunction with the school's School Readiness program.

### HOME BASED – Head Start and Early Head Start

Families receive weekly 90 minute in home visits and are invited to attend two family events per month. This program option is available to families with children ages birth to kindergarten throughout our service area.



CONTINUED ON NEXT PAGE



## FUNDING SOURCES

### US Department of Health and Human Services:

April 1, 2016 to March 31, 2017

\$1,116,673 108 children ages 3-5, 34 children ages 0-3

\$170,071 Start Up funds for TRF Center – move to 1,020 hours of service

\$23,462 Training and Technical Assistance

\$327,552 In kind (local match)

### MN Department of Education:

July 1, 2016 to June 30, 2017

\$214,955 16 children ages 3-5; 12 children ages 0-3

\$37,500 Pathway II Scholarships: Thief River Falls enhancement for additional Assistant Teacher for more 1 on 1 services for children with special needs

\$37,500 Pathway II Scholarships: Bagley enhancement to extend the program day

## BUDGET / EXPENDITURES

Federal Head Start / Early Head Start			State Head Start		
Line Item	Budget	Expenditures	Line Item	Budget	Expenditures
Personnel	\$603,371	\$577,366.55	Salary & Fringe	\$156,649	\$162,957.33
Fringe	\$256,452	\$251,653.74	Contracted Services	\$6,650	\$5,413.24
Travel	\$5,750	\$13,771.10	Staff Development	\$6,315	\$3,590.14
Equipment	\$139,900	\$80,489.76	Travel/Transport.	\$23,720	\$12,111.44
Supplies	\$117,321	\$67,594.09	Equipment	\$0	\$0
Contractual	\$97,010	\$86,359.61	Office Expenses	\$12,421	\$20,147.91
Other	\$90,402	\$95,198.25	Program Expenses	\$9,200	\$10,734.94
In Kind / Local Match	\$327,552	\$473,605.02	Pathway – TRF & Bagley	\$75,000	\$72,404.81
Carry-Over Request Moved to 2017-18 budget year		\$118,293			

## MONITORING REVIEWS

In November of 2016 a CLASS review was conducted. All five classrooms were reviewed. We received the scores back and have not yet heard if there is any risk of DRS from these scores. They do not release the national scores, by which they determine DRS status for almost a full year after reviews are completed.

- Emotional Support 5.88
- Classroom Organization 6.26
- Instructional Support 3.12

## FINANCIAL AUDIT REPORT

The annual agency audit was completed by Carlson Highland. There are no findings to be reported. ICCC qualified as a low risk auditee. The complete

audit report is on file at the Inter-County Community Council Office in Oklee, MN.

## EDUCATION

ICCC Head Start works to provide individualized educational goals for all enrolled children to assist them in achieving school readiness. Upon entering the program, all enrolled children received a developmental



CONTINUED ON NEXT PAGE



screening to determine needs for early intervention services.

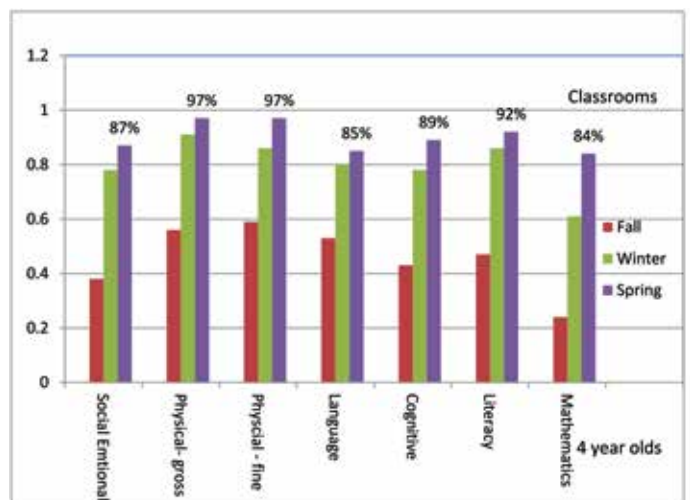
ICCC uses Teaching Strategies Gold (TSGold) as an on-going assessment tool to measure child progress towards meeting the ICCC Head Start School Readiness Goals outcomes. It is also utilized to individualize educational goals through analysis of the data from assessments. Teaching Strategies Gold measures a child's ability in ten areas:

1. Social Emotional
2. Physical
3. Cognitive
4. Literacy
5. Mathematics
6. 7. Science and Technology
8. Social Studies
9. The Arts
10. English Language Acquisition

Children are assessed three times throughout (four for EHS) the year in these areas. At this time staff works together with parents to do a Parent/Teacher conference where they will look at each child's progress and set goals to work on in the upcoming months.

For children to be considered School Ready, according to the TSGold system, they should obtain a score of 306. Bench marks are set for

each age group. Our goal for this first year using TSGold was to get 90% of all 4 year olds to this target score. The graph below shows our great success in working toward this goal. Not all ten areas are represented in the graph, we are mandated to report on first 5. We were very close to reaching our goal of 90%, we did reach Head Starts guideline of reaching 85%, except Math. We have made great gains in the area of Math, Science and Technology.



## COMPREHENSIVE SERVICES

All enrolled families receive services for the family as a whole. Family home visits allow our educators to individualize education and services for families, based on their specific needs. Educators make

CONTINUED ON NEXT PAGE





referrals to community / partnering agencies for additional services to ensure overall well-being of the family unit.

<b>Program Performance Indicators</b>		
Funded Enrollment	169	
Number of Children Served	203	
Percentage of eligible children served	39%	
Children with IEPs or IFSPs served	13% of all served	
# of family volunteer hours	2249	
	<b>HS</b>	<b>EHS</b>
Classroom Attendance	90%	NA
Children receiving preventative dental care	46%	NA
Children Up to Date on Immunizations	82%	87%
Children Up to Date on preventative medical exams	90%	80%
Fathers were involved in Head Start activities	52%	47%



All enrolled children and families receive the following:

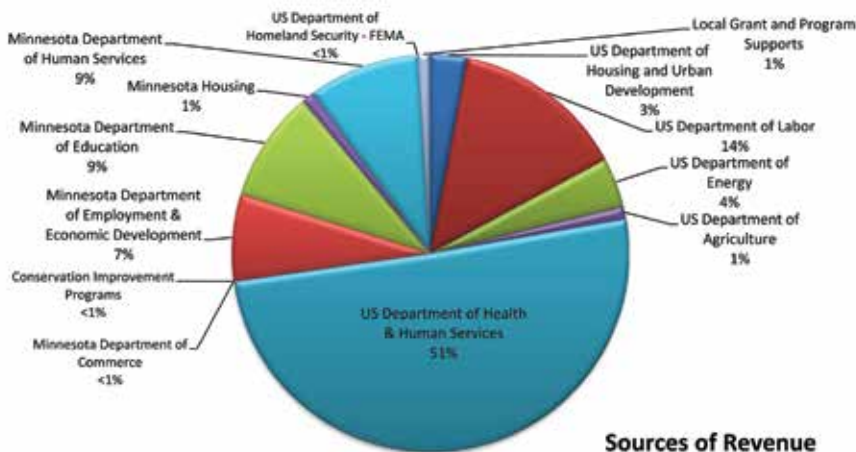
- developmental and social emotional screening
- health screenings, physical / dental exams, immunization review
- an individualized family partnership agreement
- family literacy activities
- parent education
- health, safety and nutrition education
- Financial Literacy Classes



# Financial Statement

Inter-County Community Council is audited each fiscal year by an independent Certified Public Accountant. The audit is conducted in accordance with the U.S. Generally Accepted Accounting Principles (GAAP). The summarized data that appears on this page was compiled with preliminary financial statements for the fiscal year ending September 30, 2017. The audited financial statements for the Agency are available for public inspection on the Agency's website.

Revenues	
Federal Grants	\$ 2,347,983
State Grants	\$ 864,511
Local Grants & Program Support	\$ 56,825
<b>Total Revenues</b>	<b>\$ 3,269,319</b>



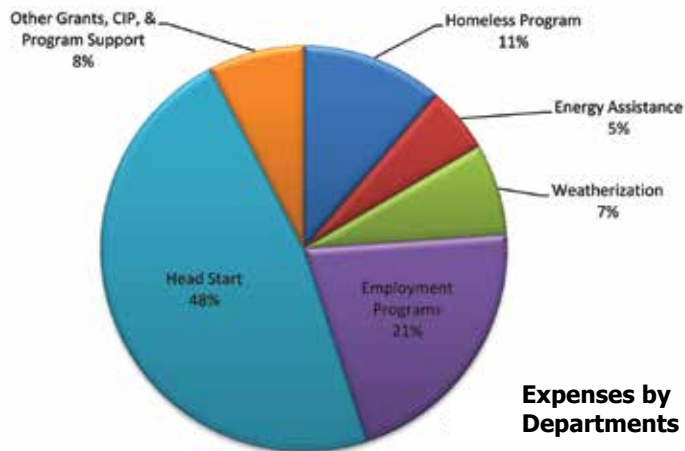
Sources of Revenue	
US Department of Housing & Urban Development	\$ 84,214
US Department of Labor	\$ 445,574
US Department of Energy	\$ 131,297
US Department of Agriculture	\$ 36,671
US Department of Health & Human Services	\$ 1,647,427
US Department of Homeland Security - FEMA	\$ 2,800
Minnesota Department of Commerce	\$ 275
Minnesota Department of Employment & Economic Development	\$ 240,643
Minnesota Department of Education	\$ 288,258
Minnesota Housing	\$ 39,306
Minnesota Department of Human Services	\$ 296,030
Conservations Improvement Programs	\$ 13,678
Local Grant & Program Supports	\$ 32,951
<b>Total Sources of Revenue</b>	<b>\$ 3,259,124</b>

**Expenses by Category**



CONTINUED ON NEXT PAGE

Expenses by Function		
Homeless Program	\$	369,989
Energy Assistance	\$	170,676
Weatherization	\$	237,942
Employment Programs	\$	686,269
Head Start	\$	1,545,145
Other Grants, CIP, & Program Support	\$	249,103
<b>Total Expenditures</b>	<b>\$</b>	<b>3,259,124</b>



Expenses by Categories		
Wages & Benefits	\$	1,978,684
Professional & Contractual Services	\$	157,370
Vehicle Expenses & Travel	\$	169,530
Training	\$	33,065
Rent, Utilities & Maintenance - space	\$	90,889
Office supplies, communications	\$	117,044
Recruiting, Dues, Insurance, other program	\$	102,446
Direct Client Support	\$	610,096
<b>Total Expenditures</b>	<b>\$</b>	<b>3,259,124</b>

Funding Agencies & Programs	
<b>US Department of Housing &amp; Urban Development</b>	
Supportive Housing Program	
Northwest MN CoC Planning Grant	
Emergency Solutions Grant (ESG-Rehousing)	
<b>US Department of Labor</b>	
Workforce Investment Act-Youth	
Workforce Innovation & Opportunity Act-Youth	
Workforce Innovation & Opportunity Act-Adult	
Workforce Innovation & Opportunity Act-Dislocated Worker	
Senior Community Service Employment Program	
<b>US Department of Energy</b>	
DOE Weatherization	
<b>US Department of Agriculture</b>	
Supplemental Nutrition Assistance Program Outreach	
<b>US Department of Health &amp; Human Services</b>	
Energy Assistance Program	
EAP/Weatherization Program	
Head Start and Early Head Start	
Community Service Block Grant	
MNsure Outreach & Enrollment	
MNsure Outreach & Education	
MNsure Navigator/In-Person Assister	
<b>US Department of Homeland Security - FEMA</b>	
Emergency Food and Shelter Program	
<b>Minnesota Department of Commerce</b>	
Minnesota Propane Program	
<b>Minnesota Department of Employment &amp; Economic Development</b>	
Higher Education Career Advisors Program	
Minnesota Youth Program	
State Dislocated Worker	
<b>Minnesota Department of Education</b>	
Minnesota Head Start	
<b>Minnesota Housing</b>	
Family Homeless Prevention and Assistance Program	
<b>Minnesota Department of Human Services</b>	
Minnesota Community Action Grant	
Long Term Homeless Grant	
Emergency Service Program	
Transitional Housing Program	
Homeless Youth Act	
<b>Local Grant &amp; Program Supports</b>	
Conservations Improvement Programs	
Food Shelf Donations	
Hunger Solutions	
Northwest Region Health Insurance Access Project	
Reach out for Warmth Donations	
River Pointe Project	
Riverside Terrace Limited Partnership Project	
Win-E-Mac School District 2609	



# Holiday Train Food Shelf Fundraiser

held December 12, 2016 in Plummer

ICCC Food Shelf held a freewill donation meal of Hot Dogs and Chili. Thrivent Community funds were awarded which covered the cost of the Hamburger for the Chili. Thank you to all who helped make this event a great success.

We collected **846 pounds** of food (170 pounds less than last year).

- CP Railroad Check was for **\$4,500**. \$2,250 went to the ICCC food shelf and \$2,250 went to the Red Lake Falls Food Shelf.
- ICCC's total cash donation from the event: **\$3,149.11** (meal profit + CP check). All money goes back into our Food Shelf Fund.



***Christopher and Catherine with sign.***

Washington Post reporter, Christopher Ingraham, made a special appearance to present the CP Holiday Train with a special sign.



***Mayor Jim DuChamp, Catherine Johnson, Christopher Ingraham & CP Holiday Train representative.***



# Inter-County Community Council's Food Shelf

ICCC's Food Shelf serves the counties of Red Lake, Polk, Pennington and Clearwater. We have a small food shelf available to anyone who needs emergency help with food. It is open during our regular office hours of 8:00am-4:30pm, Monday-Friday.

In 2017 our food shelf gave out 8,349 pounds of food. The food shelf is funded by community

donations and fundraisers. We are able to use our funds to purchase food at a lower cost through North Country Food Bank at a rate of \$1 for \$4 worth of food. We also get donations of health & beauty items and household cleaning items from area churches. Thank you to all who support the food shelf throughout the year!



## THE PROMISE OF COMMUNITY ACTION

***Community Action changes people's lives, embodies the spirit of hope, improves communities, and makes America a better place to live. We care about the entire community, and we are dedicated to helping people help themselves and each other.***

# Inter-County Community Council Staff

– FROM OCTOBER 2016 – SEPTEMBER 2017 –

## ADMINISTRATIVE STAFF

Catherine Johnson.....Executive Director  
Janet Halvorson .....Financial Director  
Siri Vigoren.....Fiscal Assistant  
Jeanette McMullen.....Accounting Clerk  
Tracy Lee.....Department Assistant

## EMPLOYMENT & TRAINING STAFF

Jennifer Booth.....Director  
Kimberley Johnson .....Employment Case Manager  
Douglas Moen.....Employment Case Manager  
Jennifer Person .....Employment Case Manager  
Tamara Voll.....Employment Case Manager  
Amy Konickson...Employment Program Coordinator

## ENERGY ASSISTANCE STAFF

Gayle Flateland .....Director  
Gloria Moose.....Energy Assistance Specialist  
Wesley Roland .....Energy Assistance Clerk

## WEATHERIZATION STAFF

Paul Kaster .....Director

## FAMILY SERVICES STAFF

Bonnie Paquin.....Director  
Amy Beckius-Johnson .....Case Manager  
Jessica Ouradnik .....Case Manager  
Askley Tofsly .....Case Manager  
Lori Wollman.....MNSure Navigator/Case Manager

## HEAD START STAFF

D'Anne Johnson .....Director  
Lynette Kaster.....Child Services Coordinator  
Kaylani Kiesow .....Family Services Coordinator  
Ashley Solie .....Nurse  
Kristy Larson.....Program Development Assistant  
Cindy Stoneouse .....ERSEA Coordinator  
Lynn LaCoursiere.....Family Advocate  
Emily Stynsberg .....Family Advocate  
Joni Bjerklie .....Combination/Home Based Educator  
Sheila Olson.....Combination/Home Based Educator  
Heather Earls.....Combination Educator  
Kendra Hunt .....EHS Home Based Educator  
Jamie Anderson.....EHS Home Based Educator  
Michelle Glass .....EHS Home Based Educator  
Christine Hince.....EHS Home Based Educator  
Trista Cardinal.....EHS Home Based Educator  
Brandi Walser.....EHS/HS Home Based Educator  
Jamie Aune.....HS Home Based Educator  
Denise Naeseth.....HS Home Based Educator  
Harleigh O'Dier.....HS Home Based Educator  
Kami Viken .....Center Assistant/  
EHS Home Based Educator  
Harley Alby .....Center Lead Educator  
Jackie Tykward.....Center Lead Educator  
Brittany Wagner .....Center Lead Educator  
Jade Benesh .....Center Assistant Teacher  
Aimee Cosca .....Center Assistant  
Hilary Gram .....Center Assistant Teacher  
Amanda Jordan.....Center Assistant  
Jodi Koestner .....Center Assistant Teacher  
Russell Johnson.....Center Assistant Teacher  
Jessica Johnson.....Center Assistant  
Kristine Monroe.....Center Assistant/Bus Driver

# **INTER-COUNTY COMMUNITY COUNCIL**

***A Community Action Agency***



**SERVING...**

***Clearwater, East Polk,  
Pennington & Red Lake***

**COUNTIES**



***FOR 52 YEARS!***

